



**SECOND FLOOR, BUILDING 2, GRANTA CENTRE,
GRANTA PARK, CAMBRIDGE, CB21 6AL**

TO LET | OFFICE: C.5,000 – 10,000 SQ FT


BIDWELLS

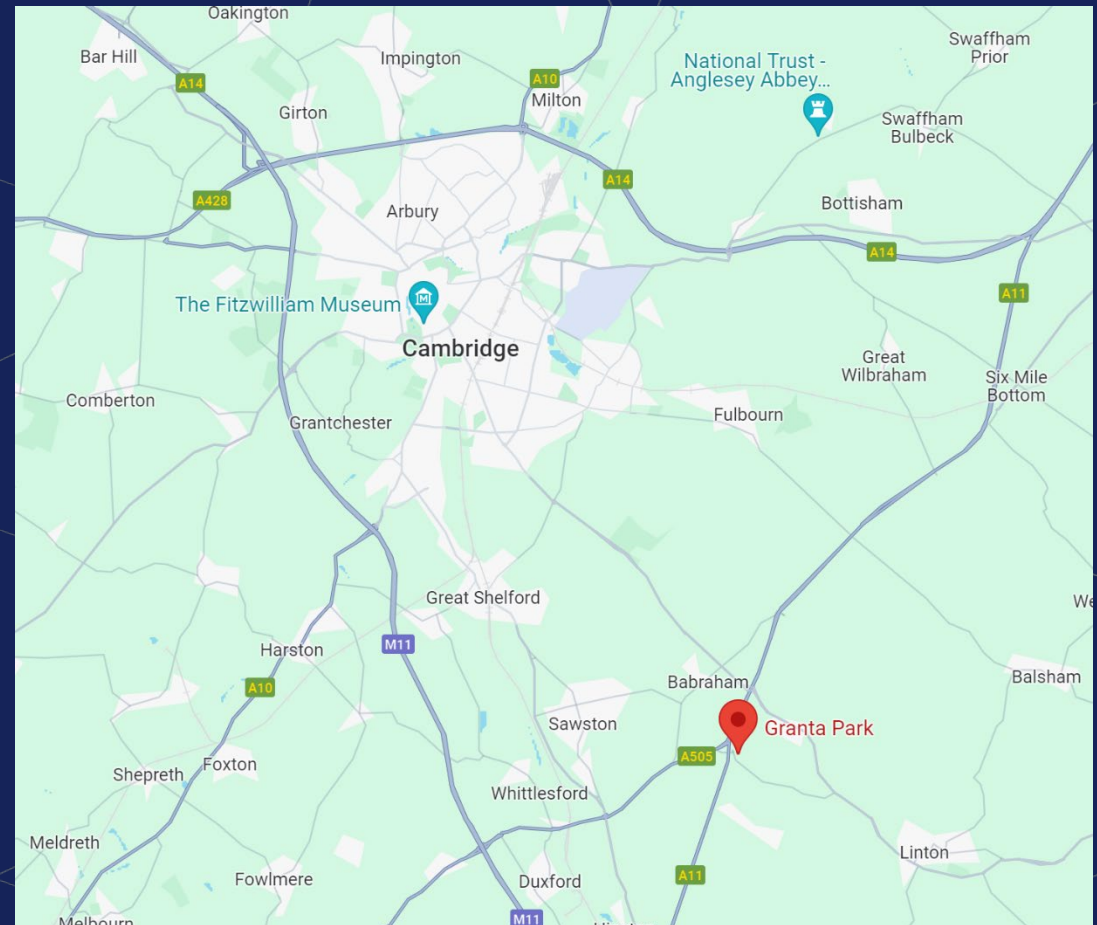
LOCATION

Granta Park is a high-quality science park located in the heart of the Cambridge Science Cluster and is home to companies including Gilead, Pfizer, Illumina, Nxera & Sphere Bio

The Park is only a few minutes' drive from the M11 Motorway and Cambridge city centre (9 miles) and is ideally placed for companies focussed on Cambridge and who also value excellent access to Stanstead Airport London as well as connections to the A1 (M) and M25.

A frequent public bus and train service runs from Cambridge city centre and links in with the Granta Park commuter bus which runs from Cambridge train station with stops including Whittlesford Parkway train station.

Cycle routes provide a cycle link between Cambridge and Granta Park as well as the villages to the south of Cambridge including Trumpington, Great Shelford, Sawston and Babraham.



DESCRIPTION

Buildings 1&2 Granta Centre, located right in the centre of Granta Park were built by TWI in 2015 (totalling 120,000 sq ft) for their own occupation and since 2019 have become multi let office and R&D buildings.

Specification includes:

- Raised access floors
- High quality open plan Cat A office space
- Generous passenger lift (1275kg load)
- Fully manned reception
- Shower facilities
- LED lighting
- VRF air conditioning
- Generous parking
- Canteen within building
- Separate amenity on Granta Park: Apiary (dedicated 40,000 sq ft building) & The Clubhouse (further café / breakout space overlooking cricket pitch).



Terms

Terms to be discussed. Available by way of new lease direct from Landlord.

Quoting rent available on application.

Rates

All interested parties are advised to make their own enquiries of Cambridge City Council on 01223 457 000.

Legal costs

All parties to bear their own legal costs.

Value added tax

All prices, premiums and rents etc. are quoted exclusive of VAT at the prevailing rate.

EPC

Available upon request.

Postcode

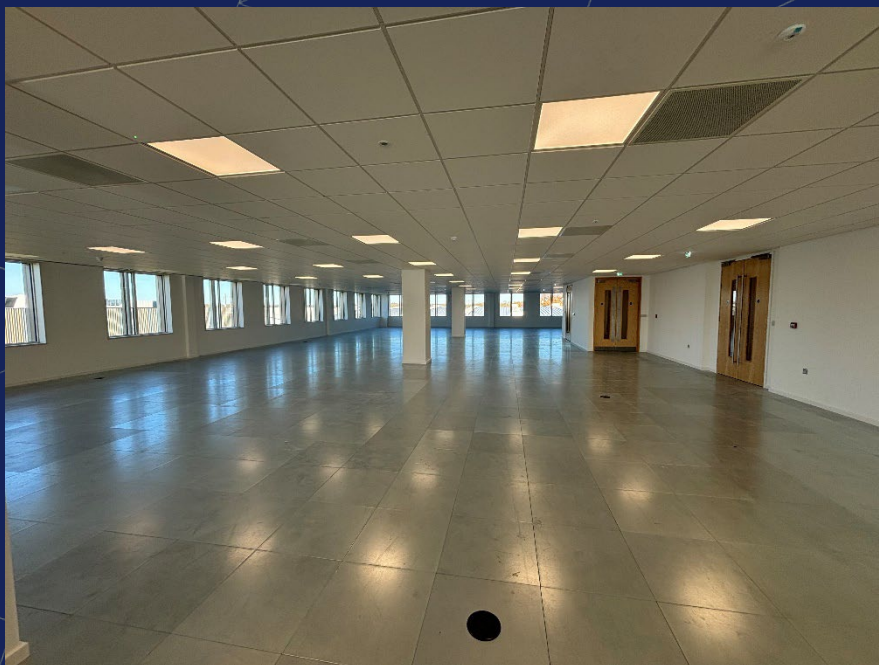
CB21 6AL



01223 841 841
bidwells.co.uk



GALLERY



Enquiries

Harry Blevins

07467 745774

Harry.belvins@bidwells.co.uk

Max Bryan

07793 808114

Max.bryan@bidwells.co.uk

Important notice

Bidwells LLP act for themselves and for the vendors/landlords of this property, whose agents they are, give notice that:

Nothing contained in these particulars or their contents or actions, both verbally or in writing, by Bidwells LLP form any offer or contract, liability or implied obligation to any applicants, viewing parties or prospective purchasers of the property to the fullest extent permitted by law and should not be relied upon as statements or representative of fact. No person in the employment of Bidwells LLP or any joint agents has authority to make or give any representation or warranty whatever in relation to this property. Any areas of measurements or distances are approximate. The text, photographs and plans are for guidance only, may not be to scale and are not necessarily comprehensive. No assumptions should be made that the property has all necessary planning, building regulation or other consents. Bidwells LLP has not carried out a survey, nor tested the services, appliances or facilities. Purchasers must satisfy themselves by inspection or otherwise. All rentals and prices are quoted exclusive of VAT unless otherwise stated.

Prospective purchasers and tenants will be asked to produce identification of the intended purchaser/tenant and other documentation in order to support any conditional offers submitted to the vendors. Bidwells LLP accepts no liability of any type arising from your delay or other lack of co-operation. We may hold your name on our database unless you instruct us otherwise.

OS licence no. ES 100017734. © Copyright Bidwells LLP 2017. Bidwells LLP is a limited liability partnership registered in England and Wales (registered number OC 344553). Registered office is Bidwell House, Trumpington Road, Cambridge CB2 9LD where a list of members is available for inspection. Your statutory rights are not affected by this notice.